

Product Type Roof PV Mounts



RM2: Metal Tile Roof Solar PV Mounting System

Introduction

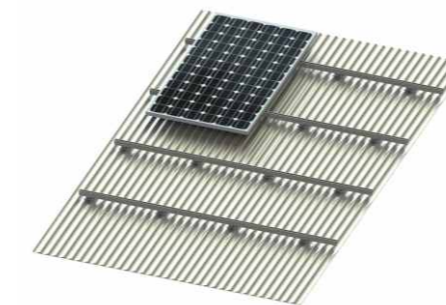
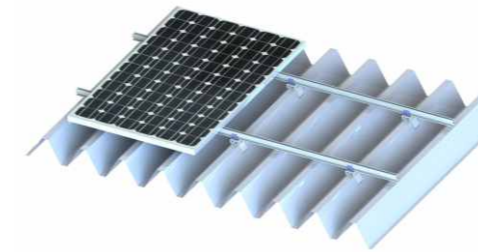
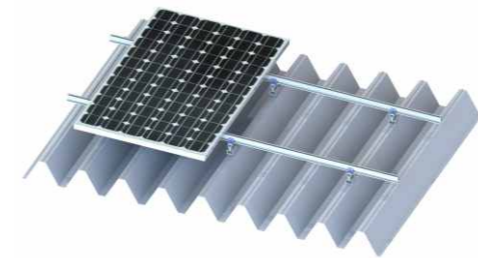
RM2 metal tile PV mounting system is suitable for factories or warehouses and other large areas of steel tile roof. Steel tile roof is generally divided into standing seam, Kok Chi style, dark button, and fastener connection. With varied steel roofs, the system solution is optimally designed for different steel tile roof structure. Fix the special bracket on steel tile, then connect the aluminum rails on to support the solar panels and fix them with special clamps. The structure of the solution is simple, reliable, and durable.

Technical Data

Design standard: JIS C8955:2011	Installation site: steel roof
Max. wind resistance: 38m/s	Applicable panels: framed or unframed
Max. anti-snow load capacity: 1.5KN/m ²	Modules direction: portrait or landscape
Span range: 1.0m~2.0m	Rail& tripod material: Al6005-T5
Distance between the roof and panels: about 100mm	Bolts& nuts Material: SUS304
Structure Design Performance Time: 25 years	Warranty: 10 years

Product Type Roof PV Mounts

Portrait



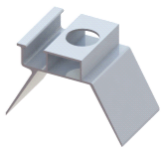
Landscape



Defined cliplocks



RY-CW-C Clip01



RY-CW-T Clip02



RY-CW-W Clip03

Main Features

Large range of applications:

The features of 100% aluminum production structure, light weight, high strength, and good corrosion resistance make the product can be applied to very harsh installation environment.

Compatibility:

Suitable for different specifications of PV modules, and the modules can be applied in different ways of arrangement, enabling random swap.

Safety and reliability:

With consideration to the load-bearing, wind, earthquake and other factors, and with rigorous calculation and testing the structure ensures safety and reliability.

Easy installation:

Most of the parts can be pre-assembled, improving the efficiency of on-site installation, and saving time and labor costs for the construction of photovoltaic projects.

Environmental and recyclable:

100% environmental and recyclable, capable to remove to new project after 3-5 years.